

# Bellamy Place

8407 Windmill Palm Court  
Leland, NC 28451

910.631.6851

WilmingtonInfo@drhorton.com

Make your dream of homeownership a reality with these masterfully designed, open concept townhomes



Bellamy Place Townhomes offers three different floor plan each with 3 bedrooms and at least 2 full bathrooms. The Carteret (end units) , The Harper (interior units) and The Caldwell (interior and end units) that offer kitchen layouts with spacious islands, open concept living, and walk-in closets. Each floor plan includes attractive features such as stainless-steel appliances and beautiful kitchen cabinets. These townhomes are located close to Downtown Wilmington, Cape Fear and Brunswick Rivers, Leland schools, shopping centers, dining and the areas best golf courses.

**D·R·HORTON®**  
*America's Builder*

[www.drhorton.com/wilmington](http://www.drhorton.com/wilmington)



Home and community information, including pricing, included features, terms, availability and amenities, are subject to change and prior sale at any time without notice or obligation. ©2020. D.R. Horton, America's Builder. All Homes Constructed by D.R. Horton, Inc., License #29676.

Lorem Ipsum



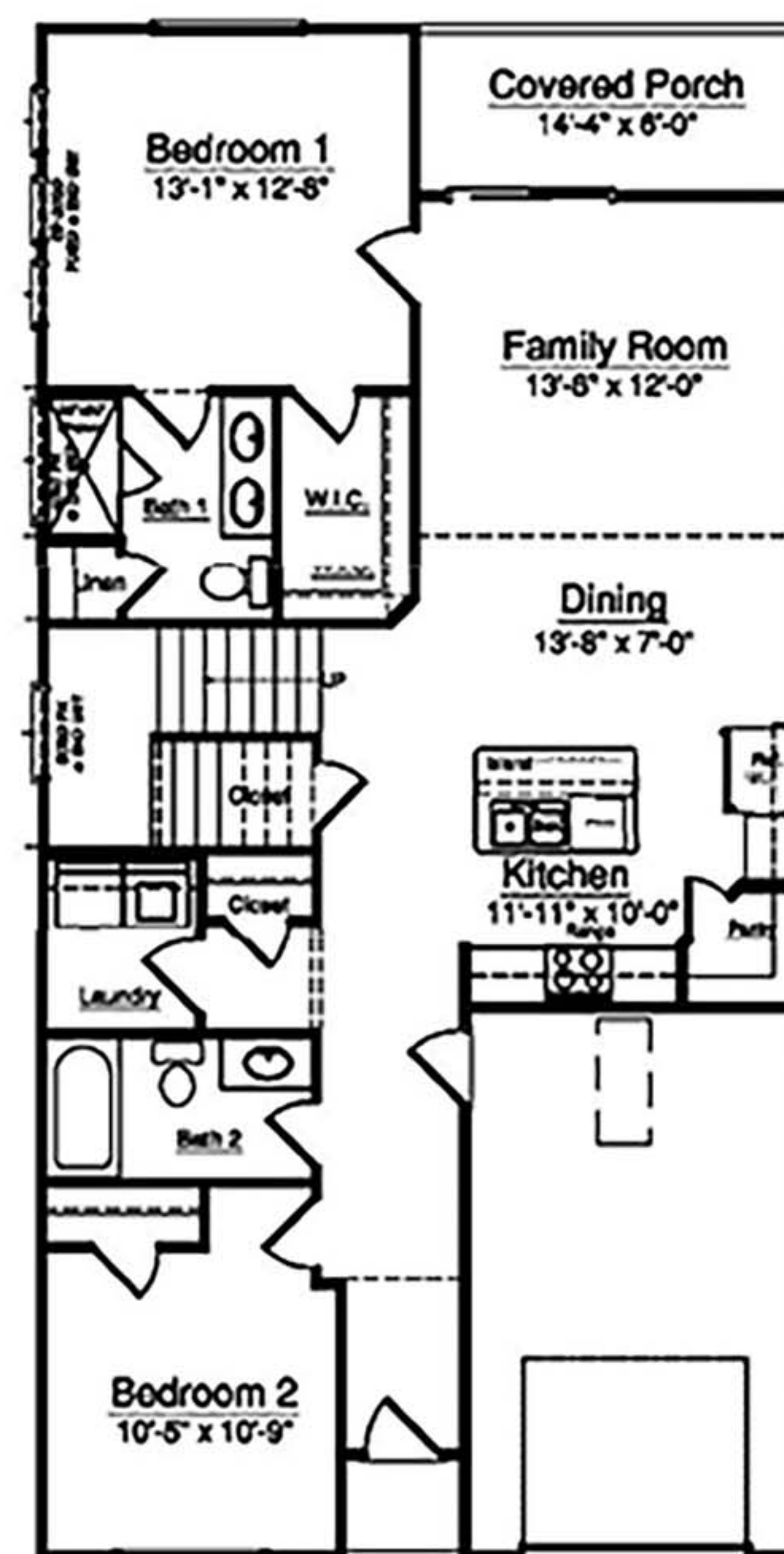
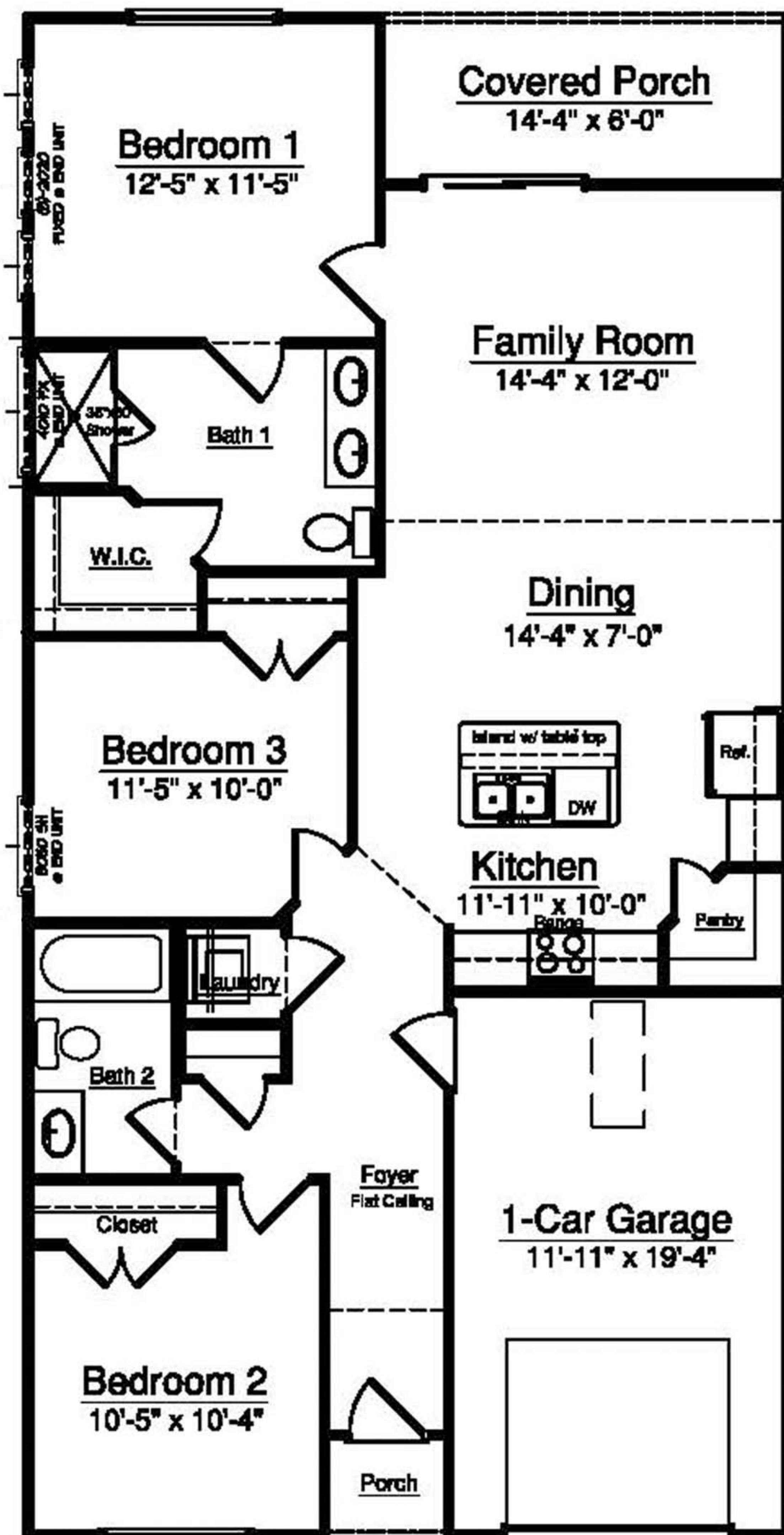
# Carteret

3 Bedrooms | 2 Bath  
1,182 Sq. Ft. | 1-Car Garage

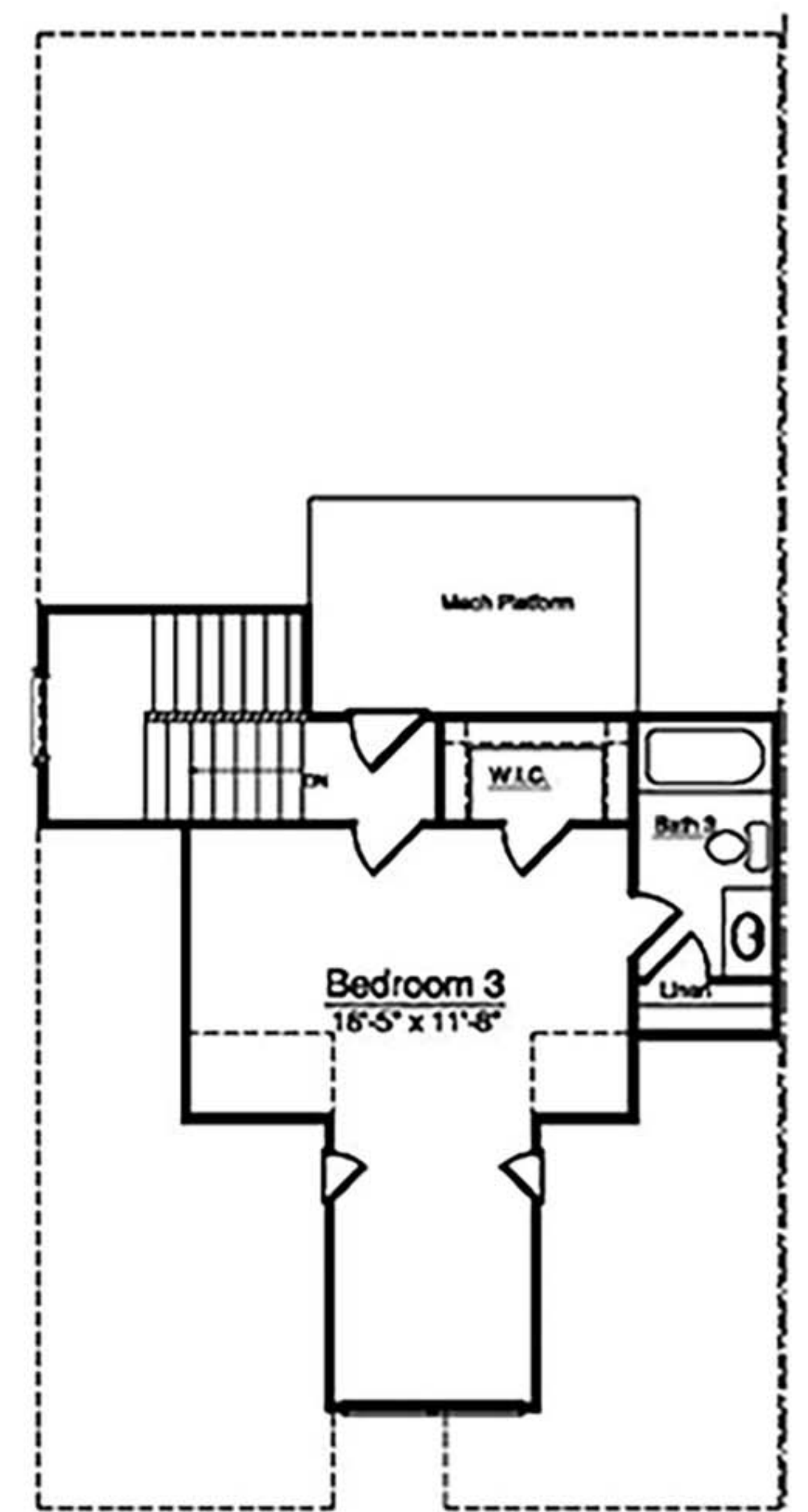


# Harper

3 Bedrooms | 3 Bath  
1,553 Sq. Ft. | 1-Car Garage



First Floor



Second Floor



D.R. Horton is an equal housing opportunity builder. Home and community information, including pricing, included features, terms, availability and amenities, are subject to change and prior sale at any time without notice or obligation. Pictures, photographs, features, colors and sizes are approximate for illustration purposes only and will vary from the homes as built. All homes constructed by D.R. Horton, Inc. License #29676.

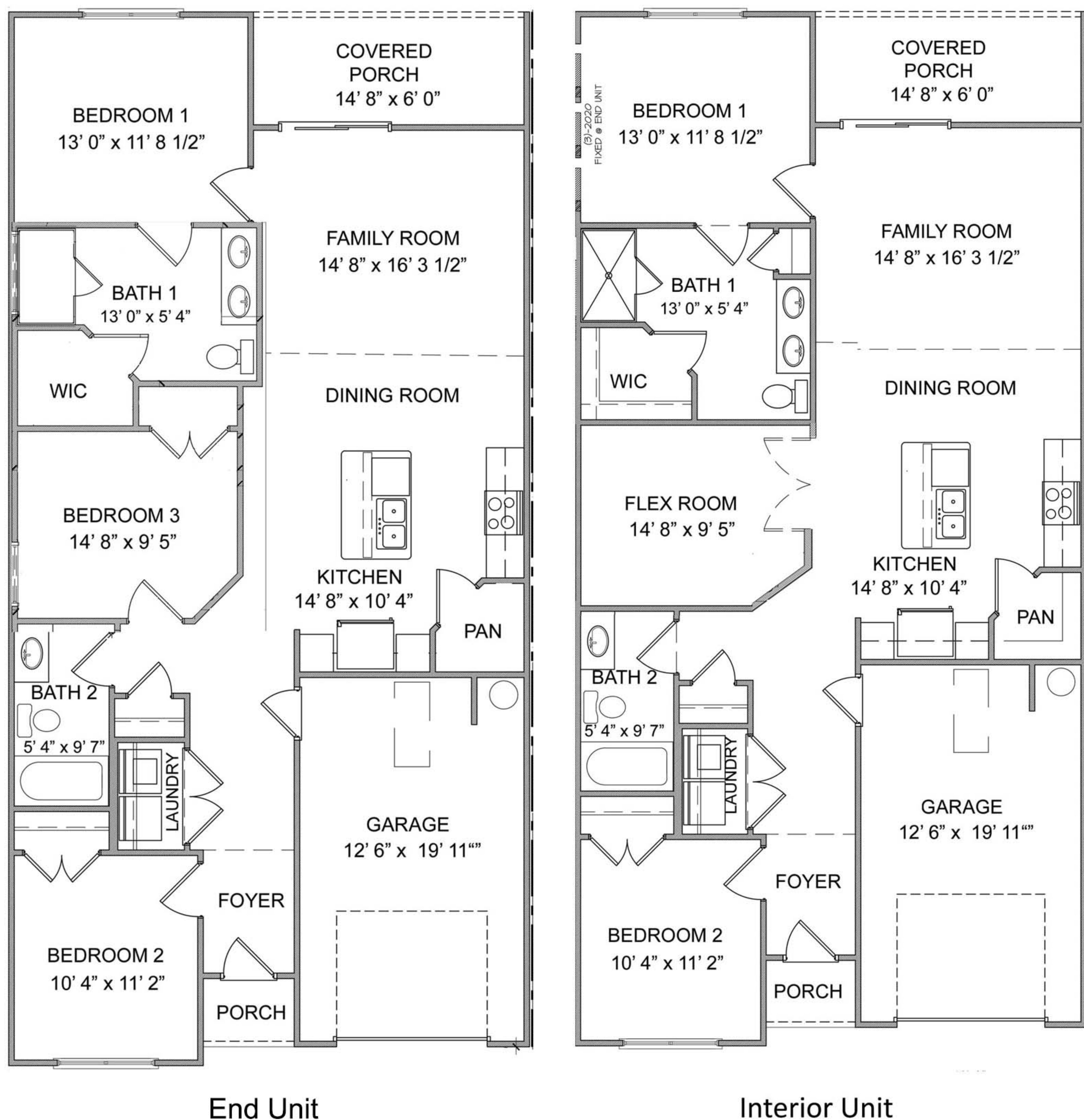


# Caldwell

End Units - 3 Bedrooms | 2 Bath | 1,176 Sq. FT. | 1- Car Garage  
Interior Units - 2 Bedrooms | 2 Bath | Flex | 1,176 Sq. FT. | 1- Car Garage



Caldwell 4-Plex



All of our homes include D.R. Horton's Home is Connected® package, an industry leading suite of smart home products that keeps homeowners connected with the people and place they value the most. The technology allows homeowners to monitor and control their home from the couch or across the globe. Control the thermostat, front door light and lock, and video doorbell from your smartphone or with voice commands to Alexa!



# Carteret

3 Bedrooms, 2 Baths  
1-Car Garage, 1189 Sq. Ft.

# Harper

3 Bedrooms, 3 Baths  
1-Car Garage, 1564 Sq. Ft.

# Area Photos

Leland's prime location provides a proximity to all things fun.



The Carteret



The Harper



Bellamy Place Townhomes



Living Room



Living Room



Brunswick Riverwalk



Kitchen



Kitchen



Leland Cypress Cove Park



Open Floor Plan



Second Floor Bonus Room



Leland Shopping



Covered Porch



Covered Porch



Downtown Wilmington Riverwalk



D.R. Horton is an equal housing opportunity builder. Home and community information, including pricing, included features, terms, availability and amenities, are subject to change and prior sale at any time without notice or obligation. Pictures, photographs, features, colors and sizes are approximate for illustration purposes only and will vary from the homes as built. All homes constructed by D.R. Horton, Inc. License #29676.



# AREAS OF INTEREST



Leland puts you in perfect position to enjoy everything that Southeastern North Carolina offers. Explore Downtown Wilmington and the Riverwalk, which is lined with shops, restaurants and nightlife. Have your pick of beaches when you want to make a short drive to fun in the sun.

# HOMESITES

Bellamy  Place



Map is for presentation purposes only. Not drawn to scale.